



jordan fishwick

WEST DIDSBURY
Larke Rise



Larke Rise, West Didsbury, M20 2UL

Guide Price £365,000



The Property

An IMPRESSIVE apartment located within the POPULAR LARKE RISE DEVELOPMENT, standing in LANDSCAPED grounds off Mersey Road in a GREAT LOCATION between Didsbury and West Didsbury Villages. 941 sq ft. The spacious living space is well planned with numerous noteworthy features including two double bedrooms with ample space for freestanding furniture and the main with an en-suite shower room, large open plan kitchen/living area with integrated appliances, separate orangery/dining room with access to a flagged sun terrace, main bathroom with white suite and chrome fittings and a generous L-shaped entrance hall with built-in storage cupboards. In addition, there is a large communal entrance area with security intercom, well tended communal gardens and grounds and allocated parking. *NO ONWARD CHAIN*

Directions

M20 2UL



- Impressive apartment
- Popular gated development
- Great location in West Didsbury
- Double glazed windows
- Two double bedrooms
- Main bathroom & En-Suite
- Large open plan living/kitchen
- Separate Orangery/Dining Room
- Allocated parking
- No onward chain

Postcode - M20 2UL

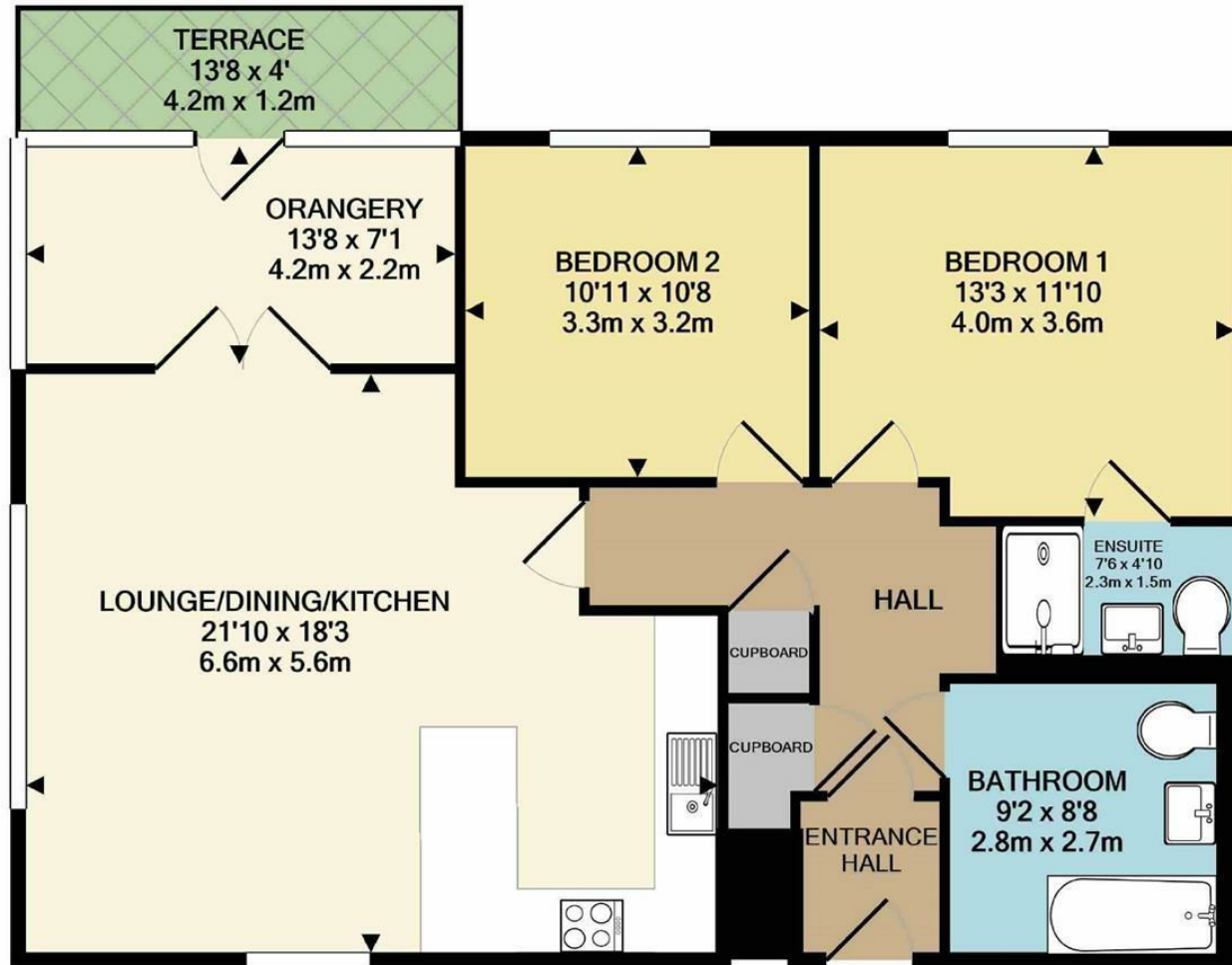
EPC Rating - D

Floor Area - 941.00 sq ft

Local Authority - Manchester City Council

Council Tax - D





TOTAL APPROX. FLOOR AREA 941 SQ.FT. (87.5 SQ.M.)
Measurements are approximate. Not to scale. Illustrative purposes only
Made with Metropix ©2021



These particulars are believed to be accurate but they are not guaranteed and do not form a contract. Neither Jordan Fishwick nor the vendor or lessor accept any responsibility in respect of these particulars, which are not intended to be statements or representations of fact and any intending purchaser or lessee must satisfy himself by inspection or otherwise as to the correctness of each of the statements contained in these particulars. Any floorplans on this brochure are for illustrative purposes only and are not necessarily to scale.

Offices also at: Wilmslow, Macclesfield, Hale, Sale, Chorlton, Glossop, Manchester & Salford

757-759 Wilmslow Road, Didsbury Village, Manchester

0161 445 4480

didsbury@jordanfishwick.co.uk
www.jordanfishwick.co.uk